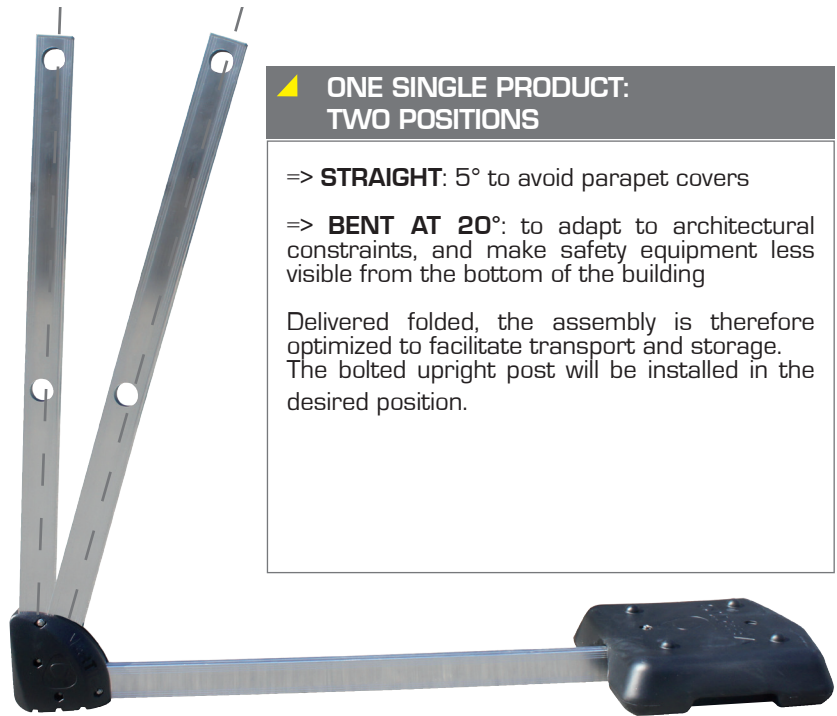
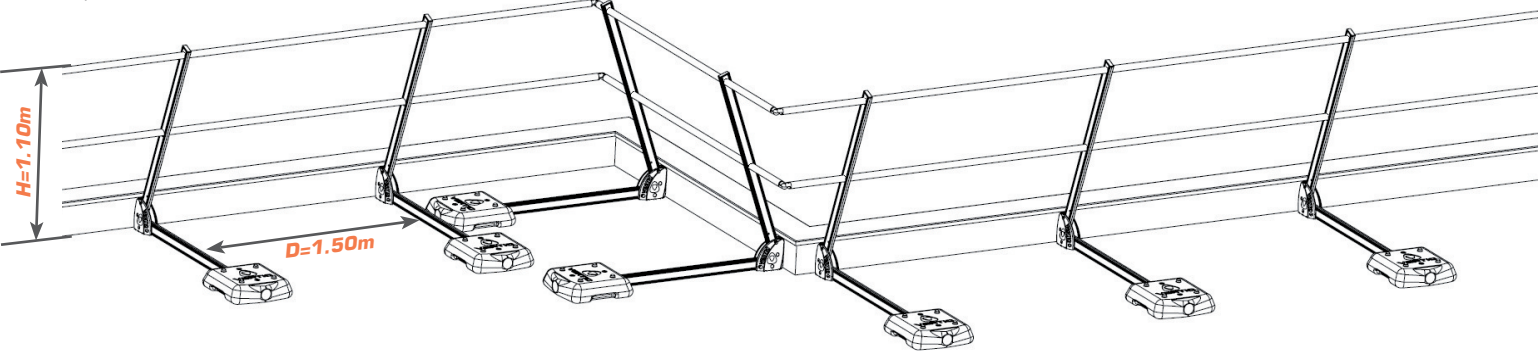




Roof slope <10°



**ONE SINGLE PRODUCT:
TWO POSITIONS**

=> **STRAIGHT:** 5° to avoid parapet covers

=> **BENT AT 20°:** to adapt to architectural constraints, and make safety equipment less visible from the bottom of the building

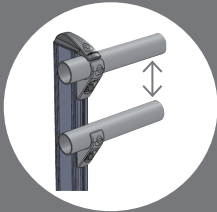
Delivered folded, the assembly is therefore optimized to facilitate transport and storage. The bolted upright post will be installed in the desired position.

**EASY STORAGE AND
TRANSPORT**



Standard pallet
1200 x 800 mm

To complete and harmonize your existing installations, this upright post can be supplied with adjustable clamps.

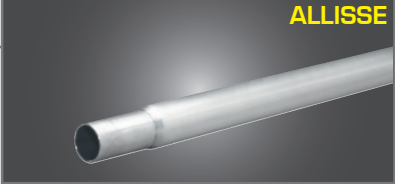


COMPONENTS ATILISSE®

Top and middle rail

In 36mm extruded aluminium.
Supplied in length of 3m, reduced at one end.

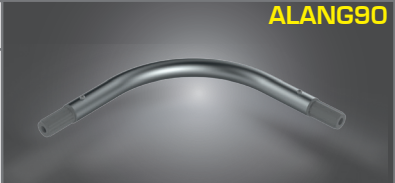
ALLISSE



Bent corner

Can be fitted into the rails to ensure an aesthetic continuity.
Easy installation.

ALANG90



Assembly unit with counterweight

Rail and upright made of aluminium.
Concrete counter-weight with plastic covering. Folded to optimize storage.

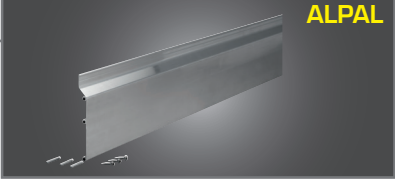
ALAEI



Aluminium plinth

The railing must be fixed with a plinth if the parapet measures less than 100mm (roofs) or 150mm (machines) in relation to the circulation area.
End plugs and corners available.

ALPAL



ALEAA

Articulated corner coupling

Allows making corners from 70° to 180°. Easily adjustable on site.
Material: plastic



ALERF

Fixed straight coupling

For assembling longitudinal sections of non-reduced rails and middle rails.
Fits directly inside the top and middle rails.



ALBOUCH

End plug

Discret ribbed plug for a perfect safety of the ends of top and middle rails.



ALEXTM

Wall end-bracket

Enables the mounting of rails on any wall. Fixed directly onto the wall with 2 fixings diameter 10mm maxi (not included).
Material: plastic



PRODUCT BENEFITS

- **RESISTANT:** made of aluminium
- **PROTECTION OF THE WATERPROOFING MEMBRANE:** thanks to the ergonomic, rounded shape of the counterweight and the front bumper. The plastic covering of the counterweight prevents from any cracking of the concrete block
- **EASE OF INSTALLATION:** pre-assembled unit
- **STABILITY OF THE SYSTEM:** the counterweight, that can be handled by one single person, includes an ergonomic handle, and ensures the stability of the system
- **OPTIMISED STORAGE:** four locating pins ensure stacking and facilitate storage of the counterweights
- Free circulation of the rainwater under the crossbar