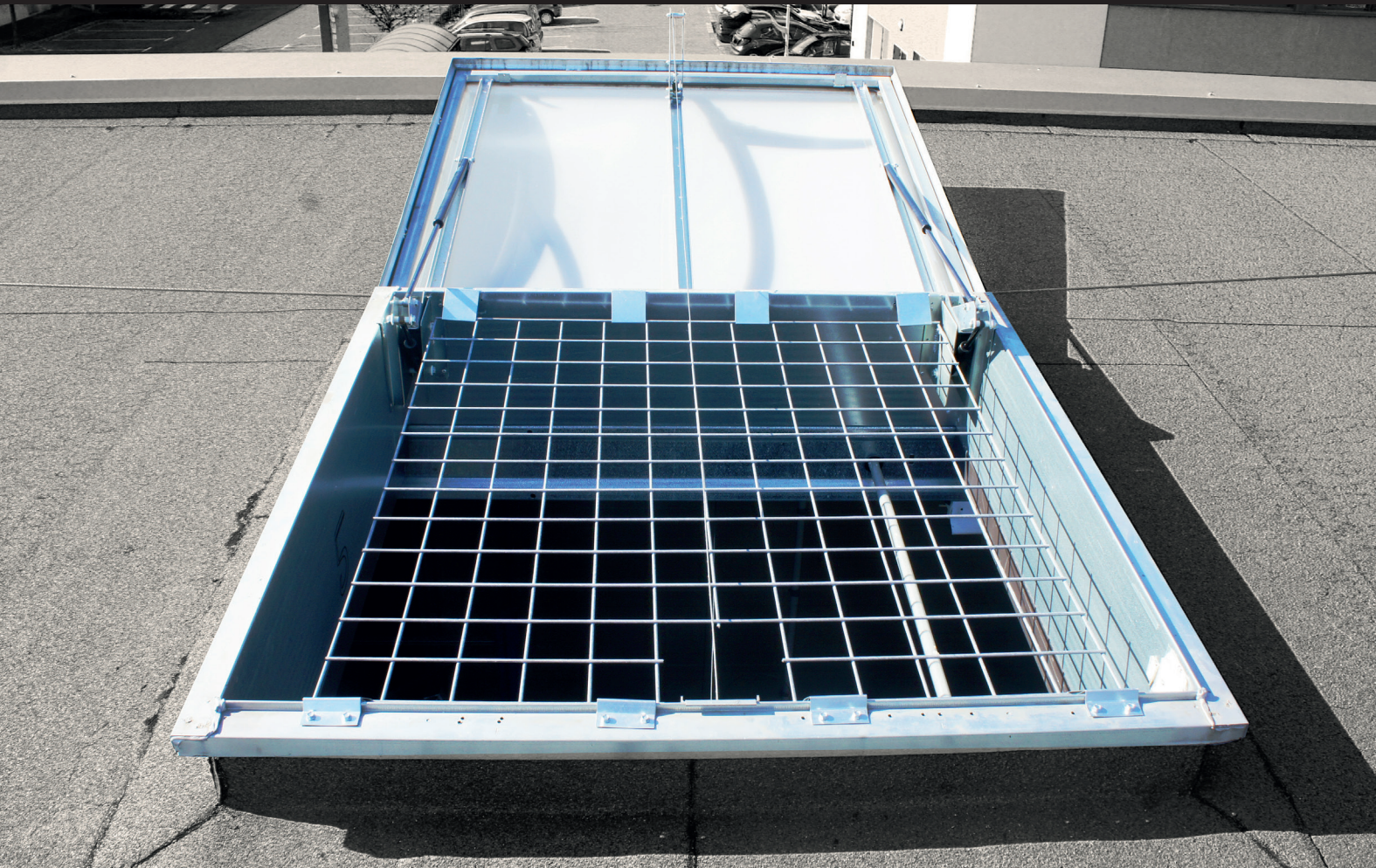
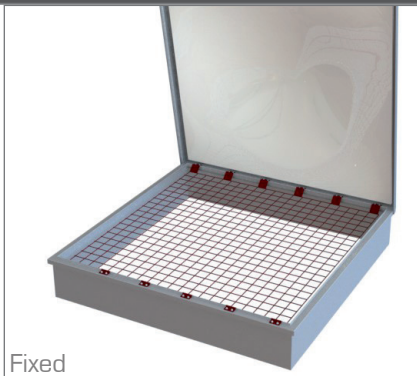


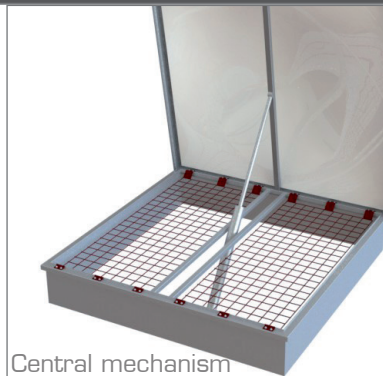
COLLECTIVE PROTECTION ALTIGRID FOR SKYLIGHTS (1200 joules)



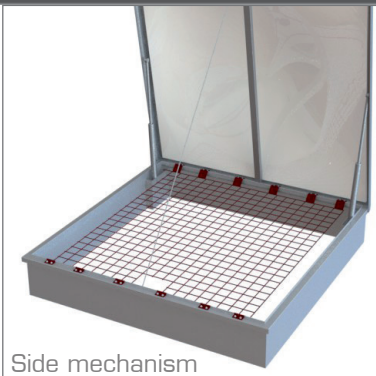
▲ UNIVERSAL MODULAR RAILING adaptable to any type of hoppers skylights



Fixed



Central mechanism



Side mechanism

PRODUCT BENEFITS

- ▲ **HANDY:** fixed on the flat part of the metallic kerb (minimum th. 12/10) of the skylight
- ▲ Installed horizontally directly inside the hopper from outside, after removing or opening the dome
- ▲ Made of galvanised steel wire
- ▲ Mesh 90x90 mm
- ▲ Fixing is done directly with self-drilling screws
- ▲ Extensible fastener tabs made of galvanised steel (th. 10/10)

FOR TRANSLUCENT ROOF ELEMENTS



▲ A MODULAR GRID, adaptable to any type of configurations



Fixing on the steel deck wave adjacent to the translucent

Dimensions of the grid determined by:

- L** = translucent width
- e** = distance between waves
- +** length required

PRODUCT BENEFITS

- ▲ **VERSATILE:** adaptable to any type of configurations
- ▲ **HANDY:** fixing done directly from the outside on the steel deck
- ▲ Grid easy to cut, in order to adjust it directly on site
- ▲ Resistance to 1200 joules
- ▲ Protective grid and brackets made of steel
- ▲ Fixing by self-tapping stainless steel screws
- ▲ Sealing ensured by EPDM seals + Vulca washers



1200 joules resistance:

Tests done following the recommendations MR72 of the CRAM, and the testing protocol from the GIF (march 1997).

