



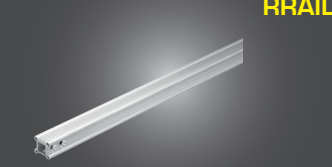
PRODUCT BENEFITS

- Load capacity per runner: 150 kg maximum (user & tools included)
- FLUIDITY:** smooth travelling upwards and downwards
- USER-FRIENDLY:** circulation on the same rail: 3 users at 3 meters distance
- HANDY:** can be installed directly on the ladder rungs

COMPONENTS VERTIRAIL®

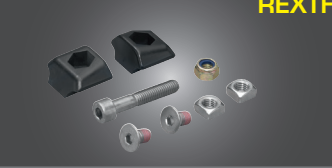
Aluminium rail

Drilled and milled.
Available in 1, 1.5 and 3 meters.



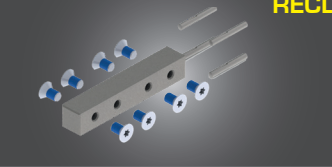
Fixed end stop

Blocks the runner at the end, to secure the system.
Adds a nice finish to the rail.



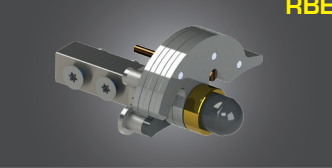
Rail coupling block

Allows the assembling of two lengths of rails. The 4 pins ensure a perfect rail lining up.



Retractable end stop

This end stop enables the runner to be fitted at the end of the rail.
Automatic locking.



Mistake-proofing device

Allows preventing any mistake when inserting the runner on the system.



Safety sign

Must be installed at the access of the secured area.
Allows the system identification and control.



Fixing bracket for ladders

Can be positioned along the rail.
Adjustable to the size and the spacing of the ladder rungs.
Compatible with all the spacings.



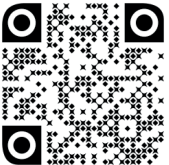
Switch

Allows a continuity of the movement, and the change of circulation of the runner. Available in 3 or 4 directions.



ONLINE TUTORIALS

For more information regarding the use or the installation of our VERTIRAIL rail system, please go to our YouTube channel and check out our online tutorials!



For a frontal exit, an extension bracket can be added. (Ref. PHR2)



RSUPECH rail support fixing principle on ladder

