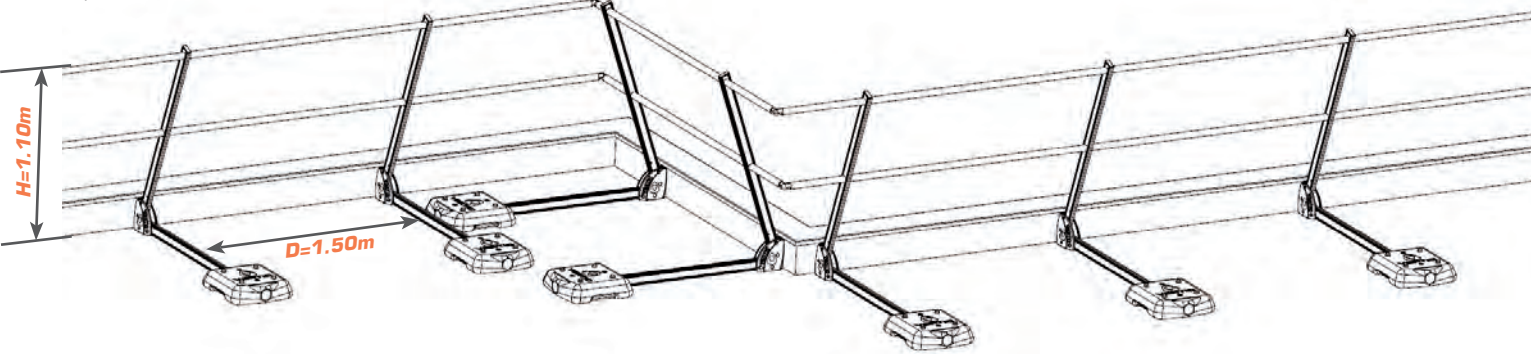




Roof slope <10°



**ONE SINGLE PRODUCT:
TWO POSITIONS**

=> **STRAIGHT:** 5° to avoid parapet covers

=> **BENT AT 20°:** to adapt to architectural constraints, and make safety equipment less visible from the bottom of the building

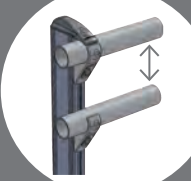
Delivered folded, the assembly is therefore optimized to facilitate transport and storage. The bolted upright post will be installed in the desired position.

**EASY STORAGE AND
TRANSPORT**



Standard pallet
1200 x 800 mm

To complete and harmonize your existing installations, this upright post can be supplied with adjustable clamps.

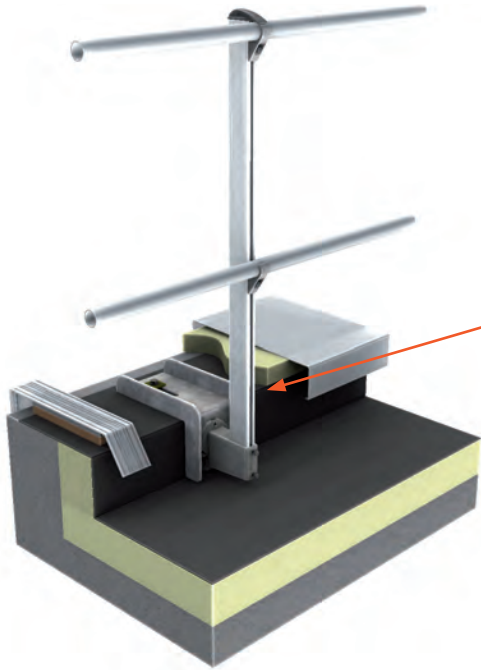


PRODUCT BENEFITS

- **RESISTANT:** made of aluminium
- **PROTECTION OF THE WATERPROOFING MEMBRANE:** thanks to the ergonomic, rounded shape of the counterweight and the front bumper. The plastic covering of the counterweight prevents from any cracking of the concrete block
- **EASE OF INSTALLATION:** pre-assembled unit
- **STABILITY OF THE SYSTEM:** the counterweight, that can be handled by one single person, includes an ergonomic handle, and ensures the stability of the system
- **OPTIMISED STORAGE:** four locating pins ensure stacking and facilitate storage of the counterweights
- Free circulation of the rainwater under the crossbar

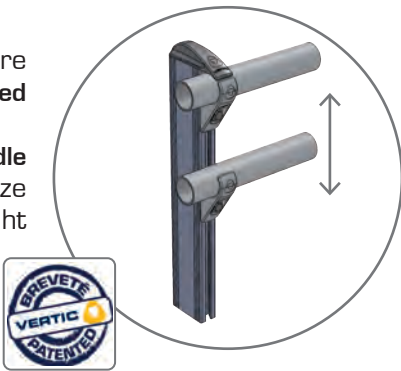
COMPONENTS ATILISSE®

Top and middle rail In 36mm extruded aluminium. Supplied in length of 3m, reduced at one end.	ALLISSE 	ALEAA 	Articulated corner coupling Allows making corners from 70° to 180°. Easily adjustable on site. Material: plastic
Bent corner Can be fitted into the rails to ensure an aesthetic continuity. Easy installation.	ALANG90 	ALERF 	Fixed straight coupling For assembling longitudinal sections of non-reduced rails and middle rails. Fits directly inside the top and middle rails.
Assembly unit with counterweight Rail and upright made of aluminium. Concrete counter-weight with plastic covering. Folded to optimize storage.	ALAE 	ALBOUCH 	End plug Discret ribbed plug for a perfect safety of the ends of top and middle rails.
Aluminium plinth The railing must be fixed with a plinth if the parapet measures less than 100mm (roofs) or 150mm (machines) in relation to the circulation area. End plugs and corners available.	ALPAL 	ALEXTM 	Wall end-bracket Enables the mounting of rails on any wall. Fixed directly onto the wall with 2 fixings diameter 10mm maxi (not included). Material: plastic



RAIL ADJUSTABLE FIXING SYSTEM

The top and middle rails are maintained by a patented clamping mechanism. Possible adjustment of the middle rail on the upright to standardize the spans depending the height of the parapet.

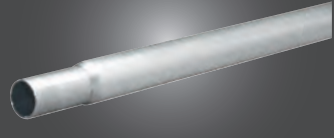


COMPONENTS ALILISSE®

Top and middle rail

In 36mm extruded aluminium. Supplied in length of 3m, reduced at one end.

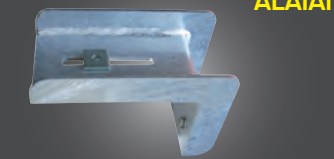
ALLISSE



Interface for insulated parapet

Reinforced bracket, made of galvanized steel, to be used with the side mounting plate.

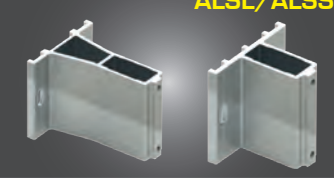
ALAIAI



Side mounting plate

Used when installing a guardrail against the parapet. Has a significant 70mm offset to make it compatible with the existing parapet cover.

ALSL/ALSS



Vertical mounting plate

Used when installing a handrail on the parapet. Can be mounted on a metallic or concrete support. Possible adjustment of the verticality.

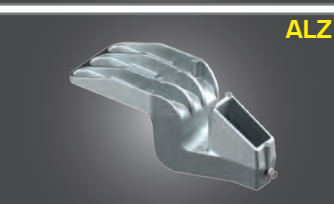
ALASV



Offset mounting plate

Installation on a concrete (2 fixings M10 or 1 fixing M12 - not supplied) or metallic parapet (6 self-drilling screws - not supplied). Possible adjustment of the verticality.

ALZ



End plug

Discret ribbed plug for the ends of top and middle rails.

ALBOUCH



ALAM / ALAMC



Extruded aluminium upright

Delivered with the fixing kit for top and middle rail pre-assembled. Allows the adjustment of the height of the middle rail on site.

ALEAA



Articulated corner coupling

Allows making corners from 70° to 180°. Easily adjustable on site. Material: plastic

ALANG90



Bent corner

Can be fitted into the rails to ensure an aesthetic continuity. Easy installation.

ALPAL



Aluminium plinth

The railing must be fixed with a plinth if the parapet measures less than 100mm (roofs) or 150mm (machines) in relation to the circulation area. End plugs and corners available.

ALEXTM



Wall end-bracket

Enables the mounting of rails on any wall. Fixed directly on the wall with 2 fixings diameter 10mm maxi (not included). Material: plastic

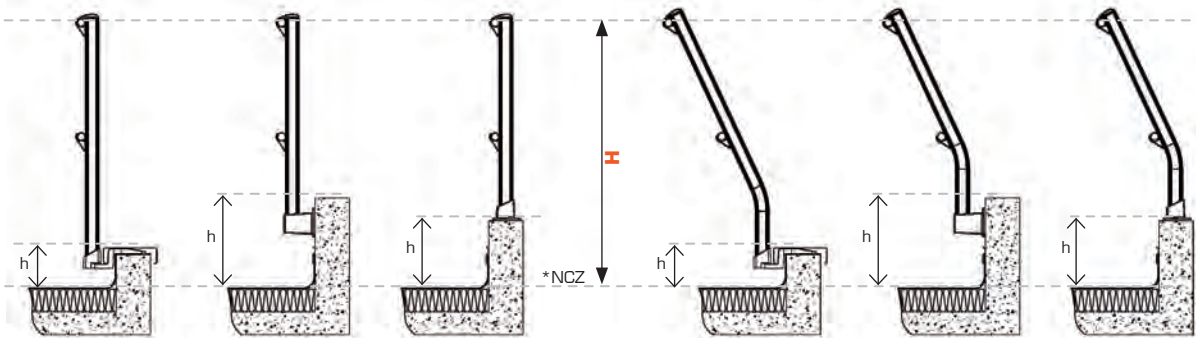
ALERF



Fixed straight coupling

For assembling longitudinal sections of non-reduced rails and middle rails. Fits directly inside the top and middle rails.

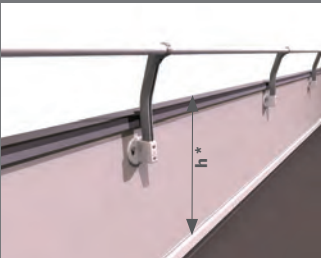
Different choice of upright according to the type of mounting plate and the height of the parapet



1000 < H < 1100 mm (NF E85-015)
H > 1100 mm (EN ISO 14122-3)

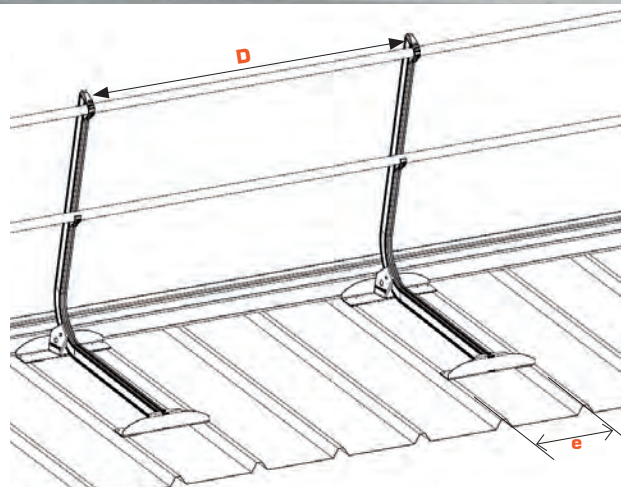
*NCZ: Normal circulation zone
(if there is some gravel, take the measurements above the gravel)

Parapet collar



Used if the peripheral parapet of a building is at least equal to h* =

50cm for roofs
60cm for machines



ADAPTATION TO PITCH OF CORRUGATIONS

The distance «**D**» between the uprights depends on the spacing «**e**» of the corrugations:

=> For e = 250mm: D = 1.5m

=> For e = 333mm: D = 1.332m

Note: for buildings with a peripheral, horizontal parapet, the rail may not follow the horizontal line, since the system is mounted directly on the roof itself which may have a slope.

In this case, choose the cranked upright option, which is less visible.

COMPATIBILITY

Can be installed on all steel decks or sandwich panels.

SPECIAL EXTENSION ARM

The arm, fitted with modular mounting plates, **can be installed in either direction of the roof waves.**

In the **standard** version, they can be fitted with a distance **between waves of 250 or 333 mm.**

MODULAR INSTALLATION

Can be mounted on the support **perpendicular** or **parallel** to the waves.

WATER TIGHTNESS OF THE ROOF

The waterproofing of the roof is guaranteed thanks to **EPDM** seals and **waterproof rivets.**

EASY OF INSTALLATION

The top and middle rails use an **smart, patented clamping mechanism.**

Possible adjustment of the middle rail on the upright to standardize the intervals depending the height of the parapet.



STANDARD HEIGHT

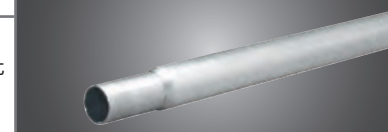
Since they are **fitted directly on the pedestrian area.**

COMPONENTS ALTILISSE®

Top and middle rail

In 36mm extruded aluminium.
Supplied in length of 3m, reduced at one end.

ALLISSE



Bent corner

Can be fitted into the rails to ensure an aesthetic continuity.
Easy installation.

ALANG90



Straight Assembly unit

Pre-drilled bottom plates at 250 and 333mm waves.

Quickly installed, and strong assembly (6 rivets per upright).

Delivered with assembly kit of top and middle rail pre-assembled.

ALAEBO



Bent assembly unit

Pre-drilled bottom plates at 250 and 333mm waves.

Quickly installed, and strong assembly (6 rivets per upright).

Delivered with assembly kit of top and middle rail pre-assembled.

ALAEBC



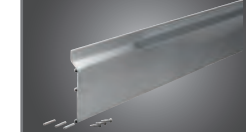
ALEAA



Articulated corner coupling

Allows making corners from 70° to 180°. Easily adjustable on site.
Material: plastic

ALPAL



Aluminium plinth

The railing must be fixed with a plinth if the parapet measures less than 100mm (roofs) or 150mm (machines) in relation to the circulation area.

ALERF



Fixed straight coupling

For assembling longitudinal sections of non-reduced rails and middle rails.
Fits directly inside the top and middle rails.

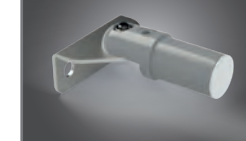
ALBOUCH



End plug

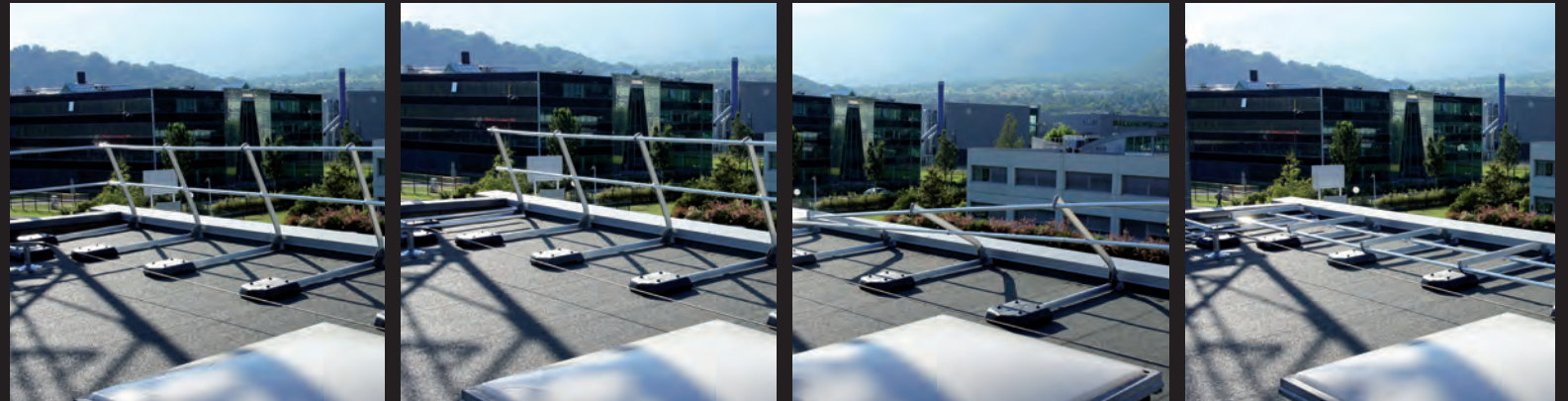
Discret ribbed plug for the ends of top and middle rails.

ALEXTM

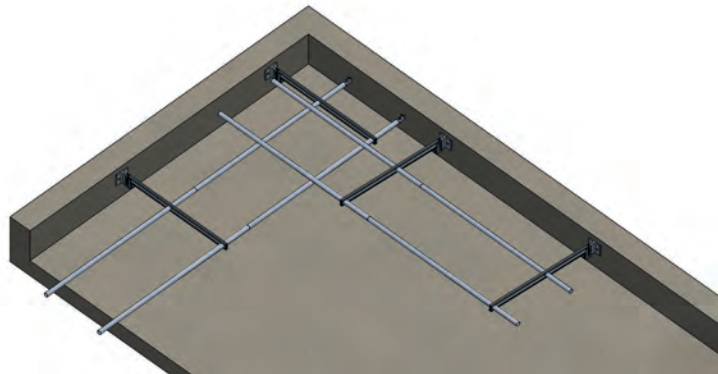
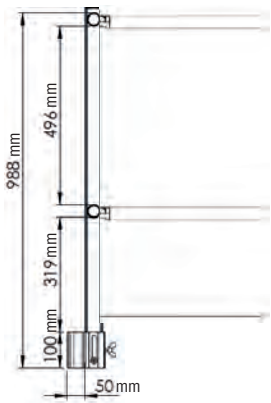


Wall end-bracket

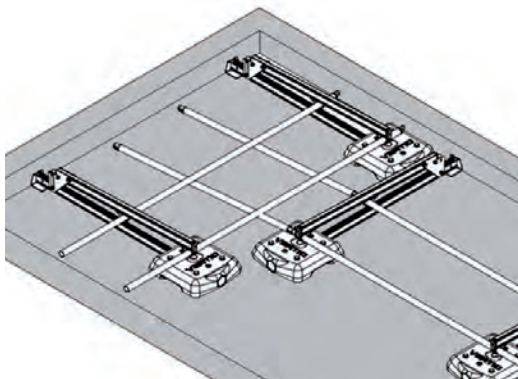
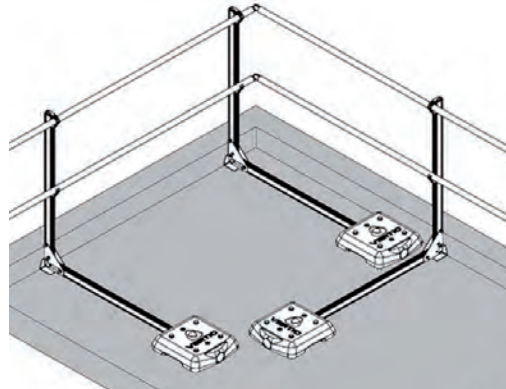
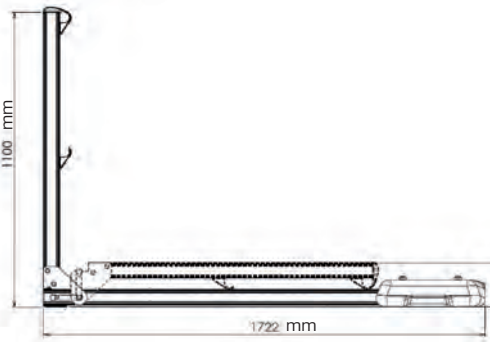
Enables the mounting of rails on any wall. Fixed directly on the wall with 2 fixings diameter 10mm maxi (not included).
Material: plastic



FOLDING STRAIGHT GUARDRAIL AGAINST PARAPET



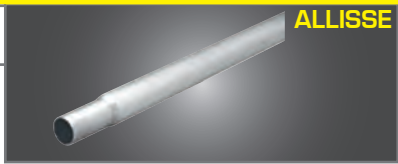
FREE STANDING STRAIGHT OR CURVED GUARDRAIL



COMPONENTS ALTILISSE®

Top and middle rail

In 36mm extruded aluminium.
Supplied in length of 3m, reduced at one end.



**Folding unit:
Straight, with counterweight**

Concrete counterweight.
Front bumper made of galvanised steel with EPDM protection.
A single tool (#10) is used for tightening the counterweight and the clamps.



Fixed straight coupling

For assembling longitudinal sections of non-reduced rails and middle rails.
Fits directly inside the top and middle rails.



End plug

Discret ribbed plug for the ends of top and middle rails.



ALLEAR

Articulated corner coupling

Allows making corners from 70° to 180°.
Easily adjustable on site.
Includes a captive winged screw.



PR000872

EDCO folding upright

Straight folding upright 1m high.



PR000880

Folding plates + screw kit

All plates are sold with screw kit (ref. PR000254) including:
- one spacer M8x35
- two BHC screws M8x16
- one butterfly screw M8x16

